

# LGM Upper Coupler Pre-Installation Instructions

---

## **Items required for Pre- installation:**

LGM upper couplers are shipped with hardware

Hardware includes:

-Air Valve

- $\frac{1}{4}$ " side plug

-Top side rubber plugs or bolts with rubber washers

## **Items not included:**

-2 to 3 gallons of encapsulating fluid (anti-freeze or LGM encapsulating fluid)

-Mounting bolts

## **Tools required for Pre-installation:**

-Suction gun for installing encapsulating fluid in coupler side framework

-Allen wrenches to remove and install cavity plug on side of unit and vent plug on bottom of fully encapsulated models

-Wrench to remove and install top cavity plugs if they are bolts

-Deep well socket wrench to remove and install tank valve

-Small funnel for installing encapsulating fluid in upper side of coupler

-Small measuring device to accommodate fluid level measurement



- 1) Perform an air pressure test of the coupler framework to assure no transit damage (units are pressure tested at manufacturer at 20 PSI) pressurize to 15lbs ( Check the inspection instructions)
- 2) Release air pressure after test is completed
- 3) Remove air valve and side plug



- 4) Fill suction gun with encapsulating fluid
- 5) Place suction gun hose end into coupler side cavity and release encapsulating fluid



- 6) Repeat prior step using 1.5 gallons of fluid into both sides of unit
- 7) Apply pipe sealant on industrial air valve and re-install the air valve and side plug

8) Remove plugs from top side plate of coupler

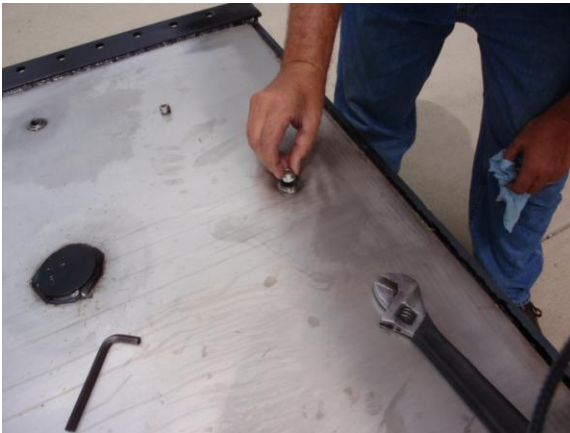
9) Place funnel into the openings and pour 1/4 gallon encapsulating fluid into each opening



10) Insert measurement device into each cavity to check encapsulating fluid level and fill accordingly to approximately 1 " measurement level



11) Re-install cavity plugs



12) Re-install vent plug on coupler bottom



13) Coupler is now ready to install on the trailer

Any question please call our office at: 877-225-8007

Thank you for choosing LGM Upper Couplers